

Report  
Results



What **genes** are associated with **Pancreatic Cancer** when considering conditions related to **Vitamin D Levels**?



Analysis

Batch effect  
correction



Analysis with  
confounding  
factors



checking  
confounding factors



predicting missing  
conditions (1<sup>st</sup> step of  
two-step regression)



data set

additional data

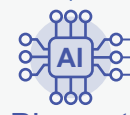


Regression Analysis

raw data



Task Decomposition



PI agent

Processing Data



Data Engineer



Domain Knowledge



Domain Expert

Analysis



Statistidan

Review



Quality Assurance



Code Reviewer

GenoMAS: Team of AI Scientist